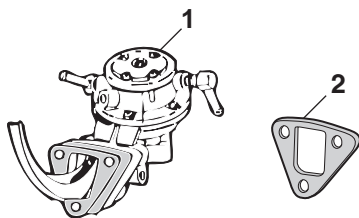


Fuel Pump

240Z 260Z 1970-75

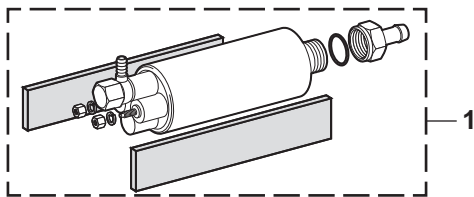


240Z and 260Z have two fuel pumps, one Mechanical Fuel Pump located in the engine compartment and one Electronic Fuel Pump located in the rear by the fuel tank.

PART	ILL#	DESCRIPTION AND APPLICATION	REQD	LIST	SELL
56-001	(1)	FUEL PUMP-MECHANICAL 240	70-73 (1)	62.44	49.95
56-003		FUEL PUMP-MECHANICAL 260	74-75 (1)	74.94	59.95
56-020	(2)	SPACER-FUEL PUMP 240-260	70-75 (1)	3.69	2.95

Fuel Pump

280Z 280ZX 1975-83
300ZX 1984-96



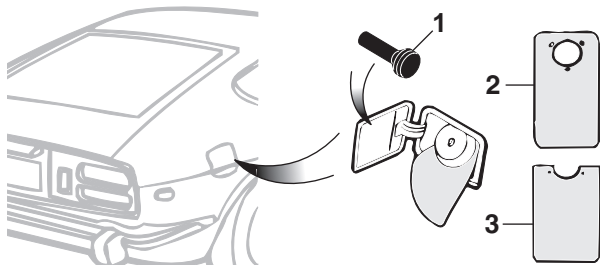
Core Refund Information - Fuel Pump: A rebuildable core will have no excessive wear. No damage due to force, fire, water or corrosion. No broken or missing terminals. No disassembled or "junkyard" cores. No converted or modified units. If it does not meet the above standards, it is not rebuildable and will not be refunded. DO NOT send a non-rebuildable core.

56-004	(1)	FUEL PUMP-ELECTRIC "A" 280 280ZX	75-83 (1)	237.44	189.95
20-3006-Z (NI)		FUEL PUMP \$45 CORE 300	84-89 (1)	224.94	179.95
57-008		FUEL PUMP CPE 300ZX	90-96 (1)	374.94	299.95
57-009		FUEL PUMP 2+2 300ZX	90-96 (1)	374.94	299.95
57-007		FUEL PUMP 300ZXT	90-96 (1)	412.44	329.95

Note: "A" Fits non-turbo models only.

Gas Tank Flaps

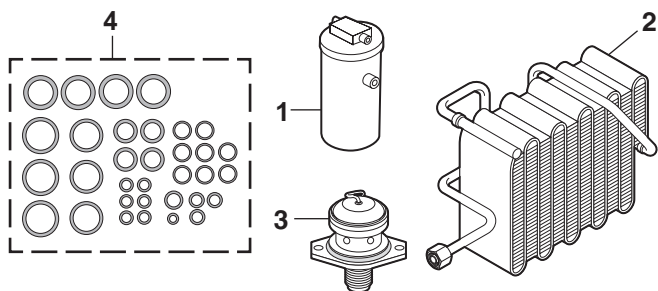
240Z 260Z 280Z 1970-78
300ZX 1984-89



PART	ILL#	DESCRIPTION AND APPLICATION	REQD	LIST	SELL
59-150	(1)	RUBBER BUMPER-GAS FILL DOOR 240-280	70-78 (2)	2.44	1.95
59-152		RUBBER BUMPER-GAS FILL DOOR 300	84-10/85 (2)	2.44	1.95
59-153		RUBBER BUMPER-GAS FILL DOOR 300	11/85-89 (2)	2.44	1.95
59-100	(2)	GAS TANK FLAP 240-260	70-74 (1)	3.69	2.95
59-101	(3)	GAS TANK FLAP 260-280	75-76 (1)	2.44	1.95
59-102		GAS TANK FLAP 280	77-78 (1)	3.69	2.95

A/C Components

240Z 260Z 280Z 1970-78
280ZX 300ZX 1979-96



All items on this page will fit Coupe, 2+2, turbo and non-turbo models unless otherwise indicated on description line.

To maintain factory warranty when replacing A/C Compressor, Condenser and/or Evaporator, the following installation and service procedures must be met: System must be flushed to remove solid contaminants and excess moisture. Replacement of Receiver/Drier and Expansion Valve. Proper evacuation, recharge, leak and performance tests performed.

PART	ILL#	DESCRIPTION AND APPLICATION	REQD	LIST	SELL
54-835	(1)	A/C-RECEIVER DRIER 260-280	74-78 (1)	62.44	49.95
54-836		A/C-RECEIVER DRIER 280	79-6/81 (1)	62.44	49.95
54-837		A/C-RECEIVER DRIER 280	7/81-83 (1)	62.44	49.95
54-838		A/C-RECEIVER DRIER 300	84-89 (1)	62.44	49.95
54-822	(2)	A/C-EVAPORATOR CORE 300	84-89 (1)	187.44	149.95
54-826		A/C-EVAPORATOR CORE 300	94-96 (1)	187.44	149.95
54-894	(3)	EXPANSION VALVE "A" 300	84-89 (1)	224.94	179.95
54-895		EXPANSION VALVE "B" 300	84-89 (1)	224.94	179.95
54-896		EXPANSION VALVE 300	90-96 (1)	37.44	29.95
54-880	(4)	A/C O-RING SET 240-300	70-93 (1)	18.69	14.95
54-881		A/C O-RING SET 300	94-96 (1)	18.69	14.95
54-862	(NI)	A/C-CONDENSER 280	79-81 (1)	249.94	199.95
54-863		A/C-CONDENSER 280	82-83 (1)	312.44	249.95
54-864		A/C-CONDENSER 300	84-89 (1)	249.94	199.95
54-874-R	(NI)	A/C COMPRESSOR-REMAN 280ZXT	81-83 (1)	374.94	299.95
54-875-R		A/C COMPRESSOR-REMAN 300	84-86 (1)	312.44	249.95
54-876-R		A/C COMPRESSOR-REMAN 300	87-89 (1)	312.44	249.95
54-877-R		A/C COMPRESSOR-REMAN 300	90-93 (1)	312.44	249.95
54-878-R		A/C COMPRESSOR-REMAN 300	94-96 (1)	937.44	749.95

Note: "A" Models without automatic temperature control.
"B" Models with automatic temperature control.

Gas Caps

240Z 260Z 280Z 1970-78
280ZX 300ZX 1979-96



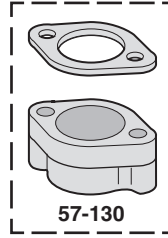
PART	DESCRIPTION AND APPLICATION	REQD	LIST	SELL
80-411	GAS CAP-NON LOCKING 240-280	70-76 (1)	87.44	69.95
80-401	GAS CAP-LOCKING 280	77-78 (1)	17.44	13.95
80-403	GAS CAP-NON LOCKING 280	77-78 (1)	6.19	4.95
80-412	GAS CAP-LOCKING 280	79-83 (1)	56.19	44.95
80-410	GAS CAP-NON LOCKING BLACK 300	84-96 (1)	7.44	5.95
80-402	GAS CAP-LOCKING BLACK 300	84-96 (1)	12.44	9.95

Fuel Injectors

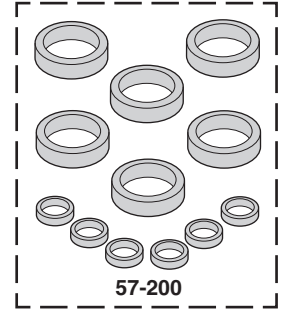
280Z 280ZX 1975-83
300ZX 1984-96



57-100



57-130



57-200

Core Refund Information - Fuel Injector: A rebuildable core will have no external damage. No cracked, rusted, burnt or water damaged units. No broken pintles. If it does not meet the above standards, it is not rebuildable and will not be refunded. DO NOT send a non-rebuildable core.

PART	DESCRIPTION AND APPLICATION	REQD	LIST	SELL
57-100	FUEL INJECTOR 280	75-78 (6)	81.19	64.95
57-100	FUEL INJECTOR 280ZX	79-83 (6)	81.19	64.95
57-101	FUEL INJECTOR 280ZXT	81-83 (6)	112.44	89.95
57-103	FUEL INJECTOR 300ZX	84-86 (6)	93.69	74.95
20-3104-Z	FUEL INJECTOR \$10 CORE 300ZX	87 (6)	87.44	69.95
20-3105-Z	FUEL INJECTOR \$10 CORE 300ZX	88-89 (6)	87.44	69.95
20-3106-Z	FUEL INJECTOR \$12 CORE 300ZXT	84-85 (6)	87.44	69.95
20-3107-Z	FUEL INJECTOR \$12 CORE 300ZXT	86-87 (6)	99.94	79.95
20-3108-Z	FUEL INJECTOR \$12 CORE 300ZXT	88-89 (6)	87.44	69.95

PART	DESCRIPTION AND APPLICATION	REQD	LIST	SELL
20-3115	FUEL INJECTOR "A" 300ZX	90-93 (6)	162.44	129.95
20-3117	FUEL INJECTOR 300ZXT	90-96 (6)	162.44	129.95
57-130	FUEL INJECTOR HOLDER 280	75-83 (6)	12.44	9.95
57-200	FUEL INJECTOR SEAL KIT 280-300	75-89 (1)	9.94	7.95
57-201	FUEL INJECTOR SEAL KIT "B" 300ZX	90-93 (6)	9.94	7.95
57-202	FUEL INJECTOR SEAL KIT "A" 300ZX	93-96 (6)	9.94	7.95
57-201	FUEL INJECTOR SEAL KIT "B" 300ZXT	90-96 (6)	9.94	7.95

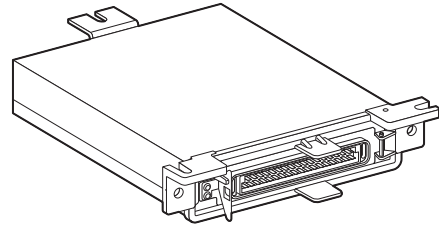
Note: "A" Replaces black or blue injector.
 "B" Replaces red injector.

Electronic Control Units (ECU)

All items on this page will fit Coupe, 2+2, turbo and non-turbo models unless otherwise indicated on description line.

Core Refund Information - ECU: A rebuildable core will have no internal or external physical damage. No broken, cracked, rusted, burnt or water damaged units. Original part label must be in place and legible. If it does not meet the above standards, it is not rebuildable and will not be refunded. DO NOT send a non-rebuildable core.

MT = Manual Transmission
AT = Automatic Transmission
CA = California Model
FED = Federal Model



PART	DESCRIPTION AND APPLICATION	REQD	LIST	SELL
20-3200-Z	ECU-REMAN MT CA \$50 CORE 280	75 (1)	287.44	229.95
20-3201-Z	ECU-REMAN AT CA \$50 CORE 280	75 (1)	287.44	229.95
20-3202-Z	ECU-REMAN MT \$50 CORE 280	76-78 (1)	287.44	229.95
20-3202-Z	ECU-REMAN AT \$50 CORE 280	76 (1)	287.44	229.95
20-3203-Z	ECU-REMAN AT \$50 CORE 280	77-78 (1)	287.44	229.95
20-3204-Z	ECU-REMAN \$50 CORE 280	79 (1)	287.44	229.95
20-3205-Z	ECU-REMAN FED \$50 CORE 280	80 (1)	287.44	229.95
20-3206-Z	ECU-REMAN CA \$50 CORE 280	80 (1)	287.44	229.95
20-3207-Z	ECU-REMAN FED \$50 CORE 280ZX	81 (1)	287.44	229.95
20-3208-Z	ECU-REMAN CA \$50 CORE 280ZX	81 (1)	287.44	229.95
20-3209-Z	ECU-REMAN \$50 CORE 280ZX	82 (1)	287.44	229.95
20-3210-Z	ECU-REMAN MT \$75 CORE 280ZX	83 (1)	374.94	299.95
20-3211-Z	ECU-REMAN AT \$75 CORE 280ZX	83 (1)	499.94	399.95
20-3212-Z	ECU-REMAN FED \$100 CORE 280ZXT	81 (1)	349.94	279.95
20-3213-Z	ECU-REMAN CA \$100 CORE 280ZXT	81 (1)	349.94	279.95
20-3215-Z	ECU-REMAN AT \$100 CORE 280ZXT	82 (1)	349.94	279.95
20-3216-Z	ECU-REMAN MT FED \$75 CORE 280ZXT	83 (1)	499.94	399.95
20-3218-Z	ECU-REMAN MT CA \$100 CORE 280ZXT	83 (1)	349.94	279.95
20-3219-Z	ECU-REMAN AT CA \$100 CORE 280ZXT	83 (1)	349.94	279.95
20-3220-Z	ECU-REMAN MT FED \$100 CORE 300ZX	84 (1)	349.94	279.95
20-3222-Z	ECU-REMAN MT CA \$100 CORE 300ZX	84 (1)	349.94	279.95
20-3221-Z	ECU-REMAN AT FED \$100 CORE 300ZX	84 (1)	349.94	279.95
20-3223-Z	ECU-REMAN AT CA \$100 CORE 300ZX	84 (1)	349.94	279.95

PART	DESCRIPTION AND APPLICATION	REQD	LIST	SELL
20-3236-Z	ECU-REMAN MT FED \$100 CORE 300ZX	86 (1)	374.94	299.95
20-3237-Z	ECU-REMAN AT FED \$100 CORE 300ZX	86 (1)	349.94	279.95
20-3239-Z	ECU-REMAN AT CA \$100 CORE 300ZX	86 (1)	374.94	299.95
20-3244-Z	ECU-REMAN MT FED \$100 CORE 300ZX	87 (1)	349.94	279.95
20-3245-Z	ECU-REMAN AT FED \$100 CORE 300ZX	87 (1)	349.94	279.95
20-3252-Z	ECU-REMAN MT FED \$100 CORE 300ZX	88-89 (1)	349.94	279.95
20-3253-Z	ECU-REMAN AT FED \$100 CORE 300ZX	88-89 (1)	349.94	279.95
20-3255-Z	ECU-REMAN AT CA \$100 CORE 300ZX	88-89 (1)	349.94	279.95
20-3260-Z	ECU-REMAN MT FED \$100 CORE 300ZX	90 (1)	349.94	279.95
20-3262-Z	ECU-REMAN AT CA \$100 CORE 300ZX	90 (1)	349.94	279.95
20-3261-Z	ECU-REMAN AT FED \$100 CORE 300ZX	90 (1)	349.94	279.95
20-3263-Z	ECU-REMAN AT CA \$100 CORE 300ZX	90 (1)	349.94	279.95
20-3269-Z	ECU-REMAN AT FED \$100 CORE 300ZX	91-92 (1)	349.94	279.95
20-3277-Z	ECU-REMAN AT FED \$100 CORE 300ZX	93 (1)	349.94	279.95
20-3224-Z	ECU-REMAN MT FED \$100 CORE 300ZXT	84 (1)	374.94	299.95
20-3226-Z	ECU-REMAN AT CA \$100 CORE 300ZXT	84 (1)	374.94	299.95
20-3225-Z	ECU-REMAN AT FED \$100 CORE 300ZXT	84 (1)	374.94	299.95
20-3227-Z	ECU-REMAN AT CA \$100 CORE 300ZXT	84 (1)	374.94	299.95
20-3241-Z	ECU-REMAN AT FED \$100 CORE 300ZXT	86 (1)	374.94	299.95
20-3248-Z	ECU-REMAN MT FED \$65 CORE 300ZXT	87 (1)	374.94	299.95
20-3256-Z	ECU-REMAN MT FED \$65 CORE 300ZXT	88-89 (1)	499.94	399.95
20-3273-Z	ECU-REMAN AT FED \$100 CORE 300ZXT	91-92 (1)	374.94	299.95

Colortune Your Engine for Peak Performance



70-383

A unique Test Spark Plug with a glass top allows you to see the gasoline to air ratio's fire with different colors. Adjust the carb until you see blue and your engine is precision tuned for peak performance.

PART	DESCRIPTION AND APPLICATION	REQD	LIST	SELL
70-383	"COLORTUNE 500"	240 260 70-75 (1)	112.44	89.95

Carburetor Synchronizer Tool ... Makes it Easier to Do the Job Right



81-902

In order for a car that is equipped with two or more carburetors to perform with maximum efficiency, both carburetors must operate with equal air flow at all degrees of its throttle opening. The Carburetor Synchronizer Tool can help your car run with better economy by balancing the air flow between the two carburetors. By manipulating the idle adjustment screw, each carburetor can be set at the same air intake volume. The tube, which must always remain in a vertical position, is adjustable through 150° to allow the tool to be used on almost any type of carburetor and manifold installation.



PART	DESCRIPTION AND APPLICATION	REQD	LIST	SELL
81-902	CARBURETOR SYNCHRONIZER TOOL	240 260 70-75 (1)	43.69	34.95

Ram Pipes 240Z 1970-72



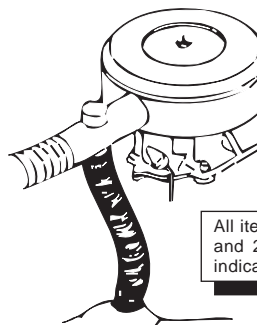
55-160

Ram Pipes for your 1970-72 SU Carbs. Directs air into carb for maximum flow and improved performance. Because Ram Pipes are designed to be used without air filters, we recommend them for race and show only.

PART	DESCRIPTION AND APPLICATION	REQD	LIST	SELL
55-160	RAM PIPE	240 70-72 (2)	28.69	22.95
79-635	SCREW W/WASHER-RAM PIPE	240 70-72 (4)	1.19	.95

Carburetor Pre Heater Duct

240Z 260Z 1970-75



54-570

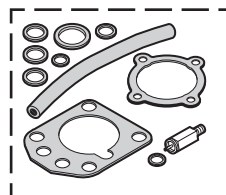
All items on this page will fit Coupe and 2+2 models unless otherwise indicated on description line.

54-570	CARBURETOR PRE HEATER DUCT	240 260 70-75 (1)	8.69	6.95
--------	----------------------------	-------------------	------	------

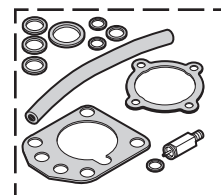
Note: Duct is 50mm in diameter and length is 18", cut to fit.

Carburetion

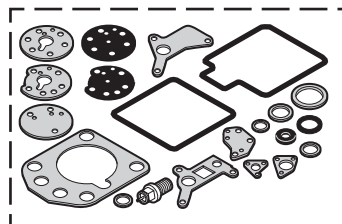
240Z 260Z 1970-75



56-800 & 56-802



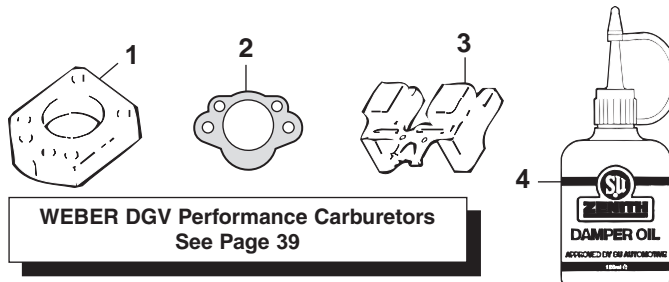
56-803



56-801

CARBURETOR REPAIR KITS: Our repair kits make the job easier so you can do it yourself for less than your mechanic would charge you to do the job. If your carburetor is acting up, get a Carburetor Repair Kit and fix it for less. Kits contain: gaskets, washers, fuel hose, insulator gasket, needle valve and seat.

PART	DESCRIPTION AND APPLICATION	REQD	LIST	SELL
56-800	CARBURETOR REPAIR KIT	240 70-71 (2)	24.94	19.95
56-802	CARBURETOR REPAIR KIT-FRONT	240 72 (1)	24.94	19.95
56-803	CARBURETOR REPAIR KIT-REAR	240 72 (1)	24.94	19.95
56-801	CARBURETOR REPAIR KIT	240 260 73-75 (2)	24.94	19.95

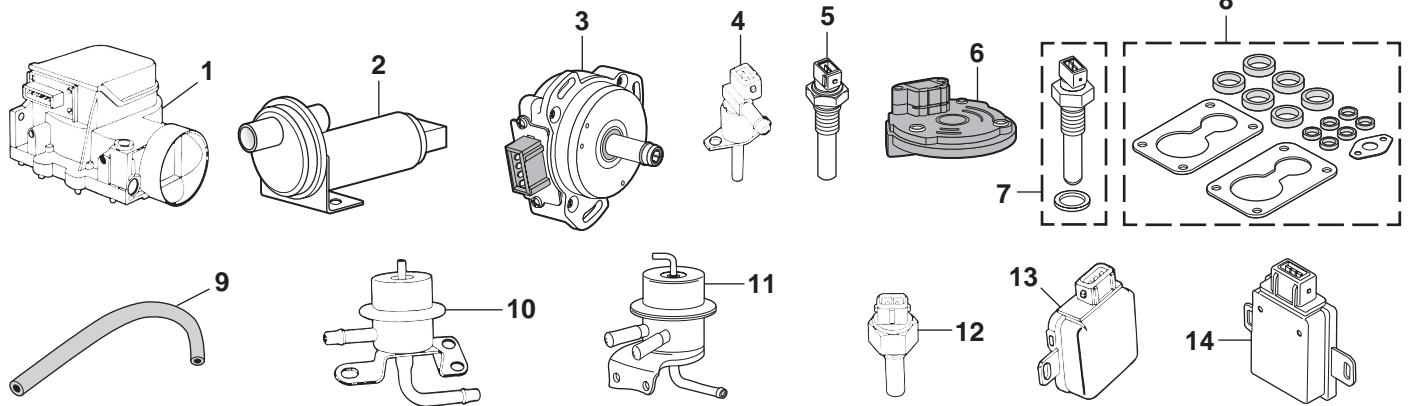


WEBER DGV Performance Carburetors See Page 39

PART	ILL#	DESCRIPTION AND APPLICATION	REQD	LIST	SELL
56-421	(1)	CARBURETOR INSULATOR	240	70-71 (2)	49.94 39.95
56-423		CARBURETOR INSULATOR	240	72 (2)	27.44 21.95
56-428	(2)	CARBURETOR GASKET	240	70-72 (2)	8.69 6.95
56-401	(3)	FLOAT	240 260	73-75 (2)	24.94 19.95
56-422	(1)	CARBURETOR INSULATOR	240 260	73-75 (2)	12.44 9.95
56-415	(4)	CARB DAMPER OIL 4.2 OZ	SU	SU CARBURETORS	11.19 8.95

Fuel Injection

280Z 280ZX 1975-83
300ZX 1984-96



MT = Manual Transmission
AT = Automatic Transmission

PART	ILL#	DESCRIPTION AND APPLICATION	REQD	LIST	SELL
57-014-Z	(1)	AIR FLOW METER "A" \$65 CORE 280	75-78 (1)	249.94	199.95
57-010-Z		AIR FLOW METER "B" \$65 CORE 280	77-78 (1)	249.94	199.95
20-3512-Z		AIR FLOW METER \$65 CORE 280ZX	79 (1)	249.94	199.95
57-013-Z		AIR FLOW METER \$65 CORE 280ZX	80-83 (1)	249.94	199.95
57-016-Z		AIR FLOW METER \$65 CORE 280ZXT	81-83 (1)	312.44	249.95
57-017-Z		AIR MASS SENSOR \$65 CORE 300	84-89 (1)	312.44	249.95
57-341		AIR MASS SENSOR-BOSCH 300	90-96 (1)	612.44	489.95
57-220	(2)	AIR REGULATOR-BOSCH 280	75 (1)	124.94	99.95
57-221		AIR REGULATOR-BOSCH 280	76-80 (1)	137.44	109.95
57-222		AIR REGULATOR-BOSCH 280ZX	81-83 (1)	124.94	99.95
57-223		AIR REGULATOR-BOSCH 280ZXT	81-83 (1)	124.94	99.95
57-224		AIR REGULATOR-BOSCH 300ZX	84-85 (1)	124.94	99.95
57-224		AIR REGULATOR-BOSCH AT 300ZX	86-89 (1)	124.94	99.95
57-225		AIR REGULATOR-BOSCH MT 300ZX	86-89 (1)	124.94	99.95
57-226		AIR REGULATOR-BOSCH 300ZXT	84-89 (1)	124.94	99.95
57-227		AIR REGULATOR-BOSCH 300ZX	90-2/92 (1)	124.94	99.95
57-228		AIR REGULATOR-BOSCH 300ZX	3/92-96 (1)	124.94	99.95
57-227		AIR REGULATOR-BOSCH 300ZXT	90-96 (1)	124.94	99.95
63-048	(3)	CAMSHAFT POSITION SENSOR 300	90-93 (1)	412.44	329.95
63-055		CAMSHAFT POSITION SENSOR 300	94-96 (1)	449.94	359.95
57-150	(4)	COLD START VALVE 280ZX	79-83 (1)	199.94	159.95
52-620	(5)	COOLANT TEMPERATURE SENSOR 280	75-78 (1)	28.69	22.95
52-623		COOLANT TEMPERATURE SENSOR 280ZX	79-83 (1)	49.94	39.95
52-621		COOLANT TEMPERATURE SENSOR 300	84-89 (1)	28.69	22.95
52-620		COOLANT TEMPERATURE SENSOR 300	90-96 (1)	28.69	22.95

Note: "A" 3 mounting bolt design.
 "B" 4 mounting bolt design.

Core Refund Information - Air Flow Meter/Air Mass Sensor: A rebuildable core will have no excessive wear. No fire or water damaged cores. No disassembled cores. If it does not meet the above standards, it is not rebuildable and will not be refunded. DO NOT send a non-rebuildable core.

All items on this page will fit Coupe, 2+2, turbo and non-turbo models unless otherwise indicated on description line.

PART	ILL#	DESCRIPTION AND APPLICATION	REQD	LIST	SELL
63-050	(6)	CRANK ANGLE SENSOR 280ZXT	82-83 (1)	249.94	199.95
52-622	(7)	AIR TEMPERATURE SENSOR 280	75-83 (1)	43.69	34.95
57-120	(8)	TUNE-UP KIT-MULTI PORT INJ 280	75-80 (1)	31.19	24.95
57-121		TUNE-UP KIT-MULTI PORT INJ 280	81-83 (1)	31.19	24.95
57-122		TUNE-UP KIT-MULTI PORT INJ 300	84-89 (1)	49.94	39.95
57-123		TUNE-UP KIT-MULTI PORT INJ 300	90-96 (1)	87.44	69.95
54-560	(9)	FUEL INJECTION HOSE-40" ALL Z-ZX	75-86 (1)	9.94	7.95
52-640	(10)	FUEL PRESSURE REGULATOR 280	75-77 (1)	87.44	69.95
52-641		FUEL PRESSURE REGULATOR 280	78-83 (1)	87.44	69.95
52-642	(11)	FUEL PRESSURE REGULATOR 300	84-89 (1)	99.94	79.95
52-643		FUEL PRESSURE REGULATOR 300	90-96 (1)	99.94	79.95
57-160	(12)	THERMO-TIME SWITCH 280	75-78 (1)	112.44	89.95
57-160		THERMO-TIME SWITCH 280ZX	79-83 (1)	112.44	89.95
52-630	(13)	THROTTLE VALVE SWITCH 280	75-78 (1)	68.69	54.95
52-652	(14)	THROTTLE POSITION SENSOR 280	80-83 (1)	41.19	32.95
52-653		THROTTLE POSITION SENSR MT 300	84-87 (1)	41.19	32.95
52-655		THROTTLE POSITION SENSR MT 300	88-89 (1)	87.44	69.95
52-654		THROTTLE POSITION SENSR AT 300	84-89 (1)	74.94	59.95
52-654		THROTTLE POSITION SENSOR 300ZX	90-95 (1)	74.94	59.95
52-656		THROTTLE POSITION SENSOR 300ZX	96 (1)	87.44	69.95
52-657		THROTTLE POSITION SENSOR 300ZXT	90-95 (1)	49.94	39.95
52-656		THROTTLE POSITION SENSOR 300ZXT	96 (1)	87.44	69.95

Fuel Pressure Regulator Eliminates High-End Power Fade



For 5/16" Fuel Line Applications

For 3/8" Fuel Line Applications

This chrome plated, adjustable Fuel Pressure Regulator allows you to fine tune your fuel flow which helps to eliminate high end power fade. Proper metering of fuel while maintaining a constant desired fuel pressure ensures better low and high rpm performance.

Fully adjustable from 1/2 to 5-1/2 psi in 1/2 psi increments. Includes 5/16" and 3/8" threaded nipple ends, flexible fuel lines, clamps and instructions. For use on carbureted systems only.

PART	DESCRIPTION AND APPLICATION	REQD	LIST	SELL
55-170	FUEL PRESSURE REGULATOR ALL CARBS	(1)	49.94	39.95